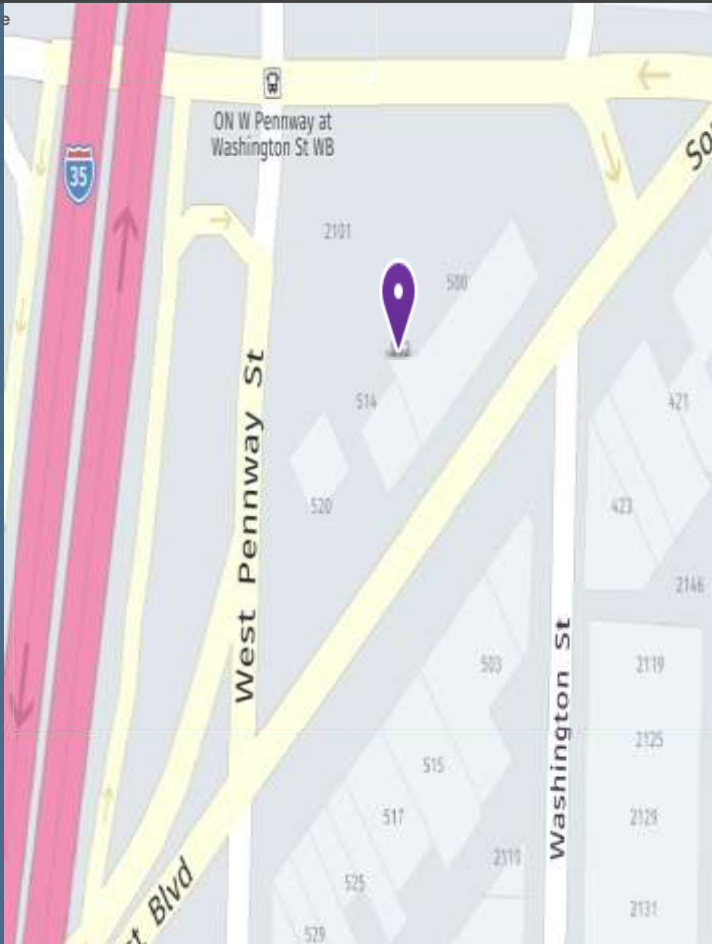


FOR LEASE

512 & 514 Southwest Blvd, KCMO

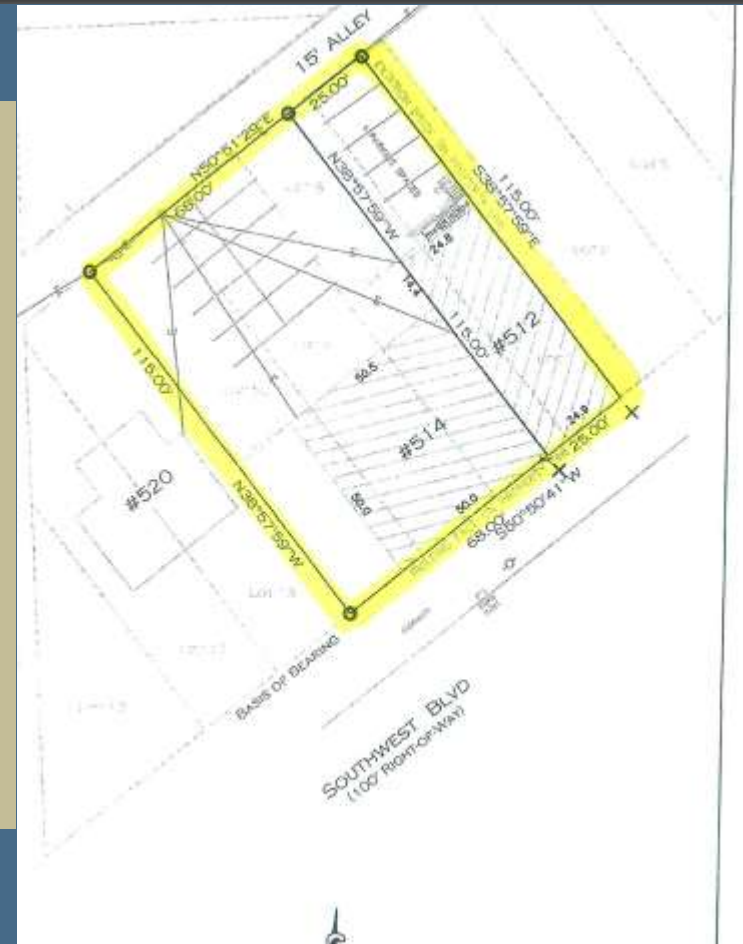
Approx. 4225 SF First floor
Approx. 1625 SF Second floor

15 Parking Spaces



Site Highlights

- Excellent Location – Historic Crossroads District
- Walking distance to galleries, restaurants and apartments
- Approximately 4225 SF First Floor & 1625 SF Second Floor
- Easy Access to I-35
- Close Proximity to Downtown Kansas City and Liberty Memorial



CTK Real Estate
10551 Barkley, Ste. 615
Overland Park, KS 66212



For Information
Chris Kamberis – 913.353.1331
email: ckamberis@ctkrealstate.com

FOR LEASE

512 & 514 Southwest Blvd, KCMO

Approx. 4225 SF First floor
Approx. 1625 SF Second floor

15 Parking Spaces



DEMOGRAPHICS

3 MILES

Population	7,584
Households	3,747
Average Income	\$40,127

Vehicles Traveled Daily	38,155
North 1-35	
State Line to Broadway	

Data ACS and MDOT



CTK Real Estate
10551 Barkley, Ste. 615
Overland Park, KS 66212

This information has been given by the owner of the property or from reliable sources.

For Information
Chris Kamberis – 913.353.1331
email: ckamberis@ctkrealstate.com

